

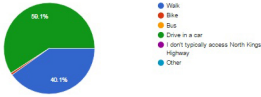
2017 North Kings Highway Survey Results

Jefferson Manor Residents



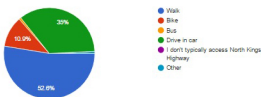
When you access North Kings Highway, what is your primary travel mode?

(137 responses)



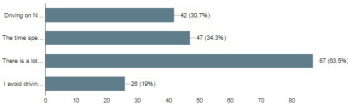
When you access North Kings Highway, what is your second most used travel mode?

(137 responses)



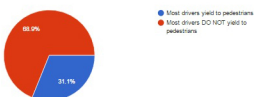
While thinking about driving on North Kings Highway, please select all options that apply to your experience driving on the road.

(127 responses)



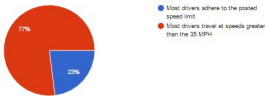
While thinking about driving on North Kings Highway, do most drivers yield to pedestrians?

(135 responses)



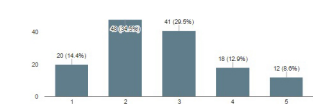
While thinking about driving on North Kings Highway do most drivers adhere to the posted speed limit of 35 MPH?

(135 responses)



While thinking about walking on North Kings Highway, please rate your comfort level, 1 being very uncomfortable and 5 being very comfortable.

(133 responses)



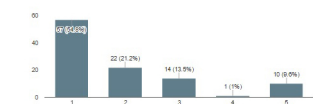
While thinking about walking on North Kings Highway, please select all options that apply to your experience.

(135 responses)



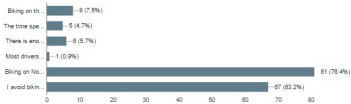
While thinking about biking on North Kings Highway, please rate your comfort level, 1 being very uncomfortable and 5 being very comfortable.

(134 responses)



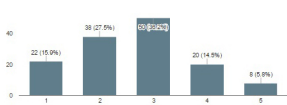
While thinking about biking on the road or sidewalk of North Kings Highway, please select all options that apply to your experience.

(100 responses)



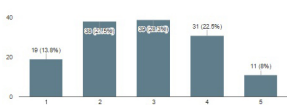
Please rate the quality and safety of the sidewalks on North Kings Highway

(130 responses)



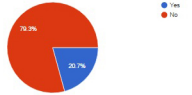
Please rate the quality and safety of the crosswalks on North Kings Highway

(130 responses)



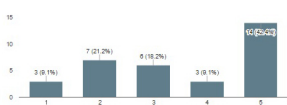
Do you live directly adjacent to North Kings Highway?

(135 responses)



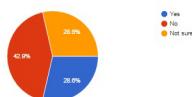
If you live directly adjacent, please rate your level of property accessibility

(33 responses)



Is the street lighting on North Kings Highway adequate for safety and accessibility?

(133 responses)



Are the crosswalks on North Kings Highway adequate for safety and accessibility?

(134 responses)

